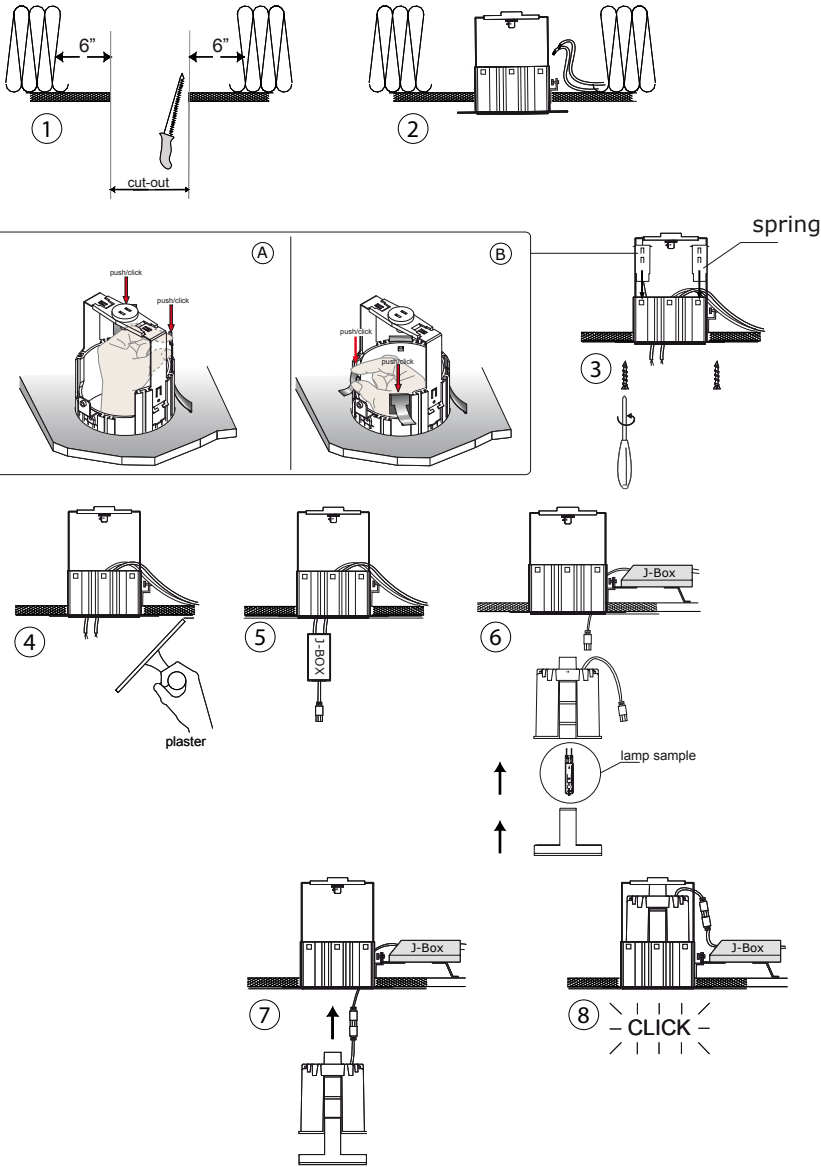


INSTALLATION INSTRUCTIONS
100 Plaster-in Downlight

CEILING CUT-OUT:

4-3/4" x 4-3/4" square cut-out
 Ø 4-3/4" round cut-out

TURN POWER OFF BEFORE BEGINNING
 SAVE THESE INSTRUCTIONS



1-4) CUTOUT THE REQUIRED OPENING. REMOVE ANY INSULATION OR DEBRIS A MINIMUM OF 6" FROM THE FIXTURE ON ALL SIDES. INSTALL BLOCKING ABOVE THE OPENING AND ALONG SIDES OF FRAME OR USE MOUNTING SPRINGS. PROVIDE CLEARANCE FOR DOWNLIGHT FRAME TO FIT THROUGH THE CEILING OPENING.

4) CONNECT WIRING TO JUNCTION BOX (SUPPLIED BY CONTRACTOR) AND MAKE UP SPLICES IN THE JUNCTION BOX. PUSH THE FRAME INTO THE OPENING AND SCREW THROUGH BLOCKING IN EACH OF THE FOUR CORNERS OF FRAME TO PROVIDE TIGHT FIT AGAINST CEILING.

5) BRING THE CONNECTOR END OF WIRE THROUGH THE FRAME AND PLASTER THE CEILING.

6) CLICK THE QUICK CONNECTORS TOGETHER TO FASTEN WIRE PIGTAIL AND LAMP MODULE. INSTALL THE LAMP AND GLASS DIFFUSER. REFERENCE PAGE 2 FOR J-BOX INSTALLATION SEQUENCE

7-8) INSERT THE LAMP MODULE INTO THE FRAME AND PUSH UPWARD TO ENGAGE CLICK LATCH PIN ON THE FRAME YOKE. TAKE CARE NOT TO FORCE THE CABLE CONNECTOR IN LINE WITH THE FRAME. MAKE SURE IT IS ALIGNED AND NOT IN CONTACT WITH FRAME.

9) ENERGIZE

BALLAST KIT INSTALLATION

