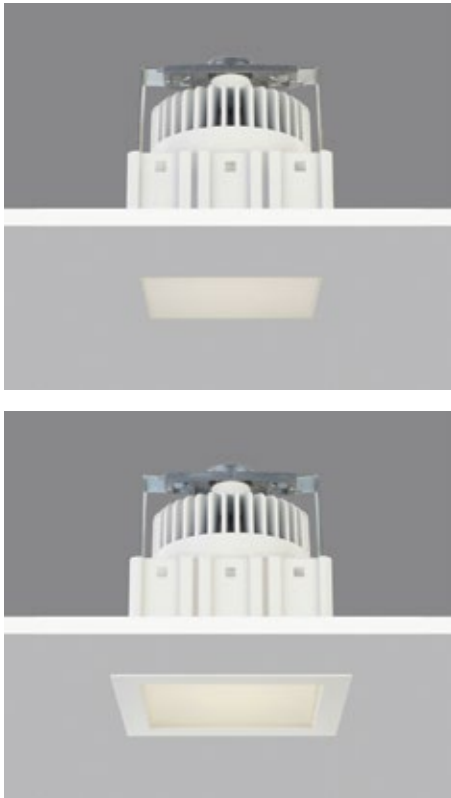
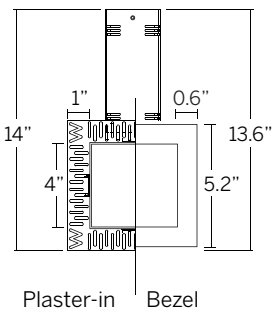
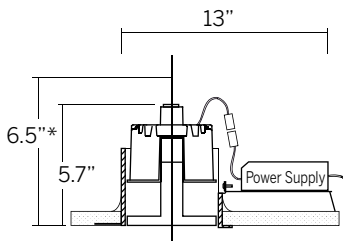


# 100 Square Downlight LED Specifications



4 inch square recessed luminaire with bezel trim or trimless 'plaster-in' for absolute minimal visual impact. Adjustable frosted diffuser with flush or regressed position.



cut-out dimensions  $\varnothing$  4 3/4"  
\*requires 6.5" clearance to install junction box

## Ordering Information

Model	LED <sup>1</sup>	Rated Lumens	Beam Angle	Voltage	Power Supply <sup>2</sup>	Diffuser
WG-P100SDL plaster-in	80 CRI XTA-827	2000 19.5W	25 46	UNV	S	FR MP
WG-B100SDL bezel	80 CRI XTA-830 XTA-835 XTA-840	1490 13.6W			D010 D3W DES <sup>3</sup>	
	95 CRI XTA-927 XTA-930 XTA-935 XTA-940	1300 15.6W 965 10.9W		120	DFPN <sup>3</sup>	

### Luminaire

- Bezel trim or trimless 'plaster-in' 4" square for drywall ceilings.
- Installation from below for remodel or new construction.
- 'Easy click' tool free installation of diecast aluminum lamp insert module.
- Die-cast aluminum trim housing with heavy gauge galvanized steel yoke with removable jbox from below ceiling.
- Pre-wired with a 'Plug and Play' electrical connection.
- Adjustable frosted diffuser with flush or regressed position.
- Powdercoat painted white - RAL 9010.

### LED<sup>1</sup>

#### ■ Xicato 80 Series, 80 CRI

XTA-827 = 2700K  
XTA-830 = 3000K  
XTA-835 = 3500K  
XTA-840 = 4000K

#### ■ Xicato Artist Series, 95 CRI

XTA-927 = 2700K  
XTA-930 = 3000K  
XTA-935 = 3500K  
XTA-940 = 4000K

### Rated Lumens

#### ■ Xicato 80 Series

2000 = 2000 lm @ 700mA, 19.5W (3K)  
1490 = 1490 lm @ 500mA, 13.6W (3K)

#### ■ Xicato Artist Series

1300 = 1300 lm @ 700mA, 15.6W (3K)  
965 = 965 lm @ 500mA, 10.9W (3K)

### Beam Angle

- 25 = 24.7° accent illumination
- 46 = 46.3° general illumination

### Voltage

- UNV = 120-277V
- 120 = 120V

### Power Supply<sup>2</sup>

- S = Standard non-dim driver, 120-277V
- D010 = EldoLED, 1%, 0-10V dimming, 120-277V
- D3W = Lutron, 1%, 3-wire fluorescent dimming, 120-277V
- DES = Lutron, 1%, EcoSystem E1/E2 digital dimming, 120-277V<sup>3</sup>
- DFPN = Lutron 1% forward phase with neutral, 120V only<sup>3</sup>

### Diffuser (frosted diffuser standard)

- FR = frosted diffuser
- MP = micro prism glass

### Emergency

- Emergency LED driver available, order separately.

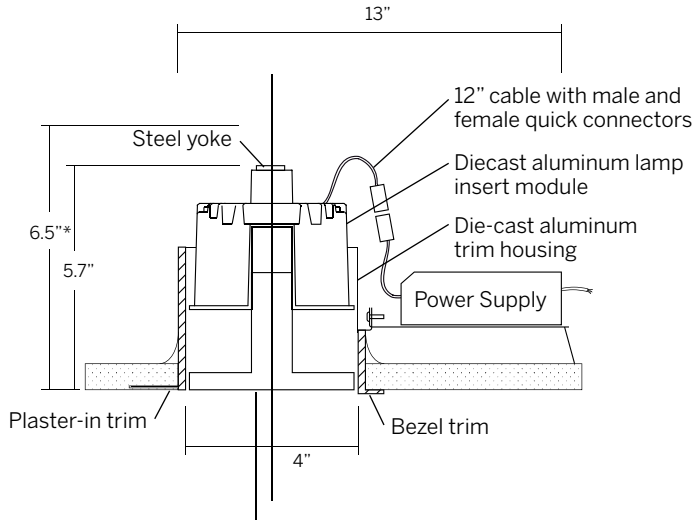
<sup>1</sup>Other lumen packages available, consult factory.

<sup>2</sup>See power supply page for details.

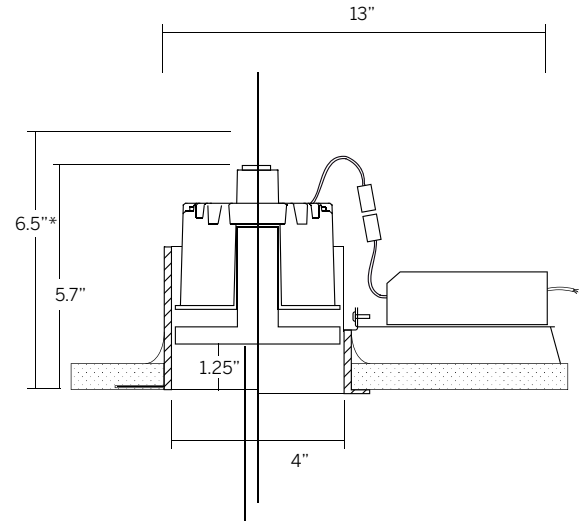
<sup>3</sup>Consult factory for lead-times.



# 100 Square Downlight LED Dimensions



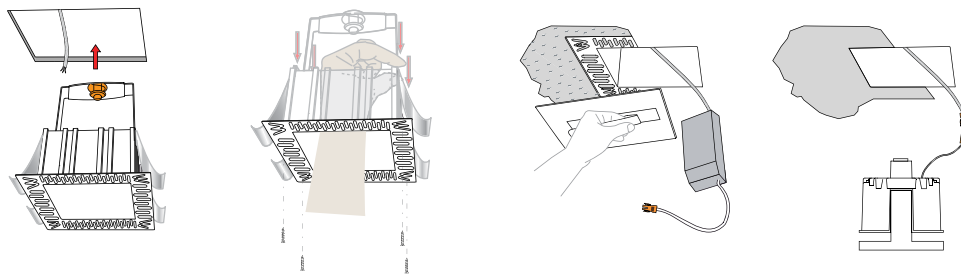
Frosted diffuser (flush position)



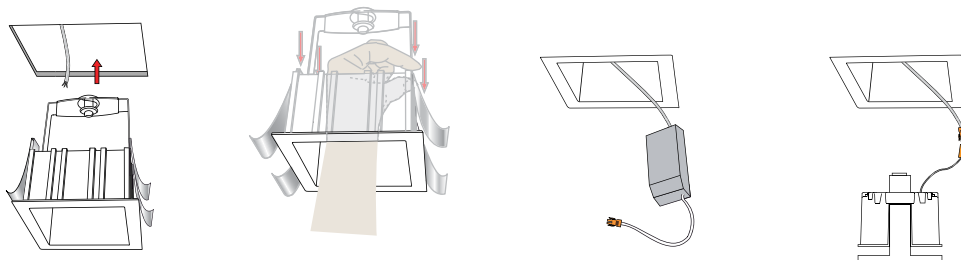
Frosted diffuser (regressed position)

\*requires 6.5" clearance to install junction box  
cut-out dimensions  $\varnothing 4 \frac{3}{4}$ "  
See power supply page for details.

## Plaster-in instructions



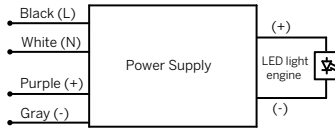
## Bezel instructions



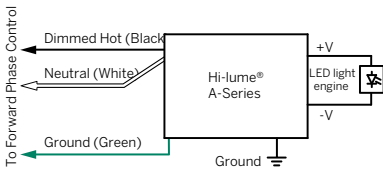
S (Standard non-dim)



D010 (EidoLED 0-10V)

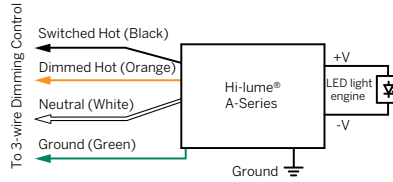


DFPN (1% Lutron forward phase with neutral)

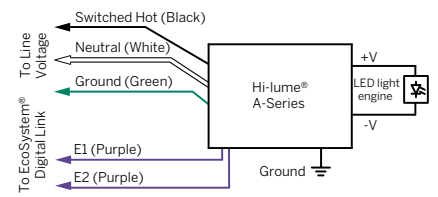


Note: Colors shown correspond to terminal blocks on driver.

DW3 (Lutron 1%, 3-wire)



DES (Lutron 1% EcoSystem® digital)



Note: Colors shown correspond to terminal blocks on driver.