

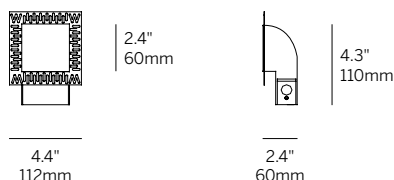
2.4" Square Ceiling / Floor Wash



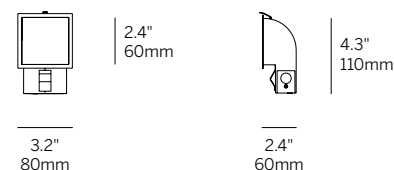
Recessed Plaster Trim



Recessed Bezel Trim



Recessed Plaster Trim (RPT)



Recessed Bezel Trim (RBT)

cut-out dimensions 2 3/4" x 2 3/4"

Ordering Information

WG-60SCFW		L	92			W	
Model	Fixation	Power ¹	CRI	CCT ²	Driver ³	Finish	Options
WG-60SCFW	RPT RBT	L	92	27 30 35 40	X RS010 RD010 RSPH RPEQ0 RD2S	W	EM AWNRF

Luminaire

- 2.4" square aperture recessed wall fixture with concealed source providing asymmetric illumination for ceiling or floor wash applications.
- Efficacy up to 25 lumens per watt (delivered).
- CREE 2-step MacAdam LEDs.
- CRI 92+ standard.
- L70 (TM21 Projected 85° C) Static White 66,500 hours.
- ETL and ETL-C for dry and damp location.
- Luminaire installed and maintained from the wall side. Maximum wall thickness 5/8" (3.5" minimum clearance in wall).
- 'Easy click' tool free installation of diecast aluminum lamp insert module.
- 5-year warranty.

Fixation

- RPT = Recessed plaster trim
- RBT = Recessed bezel trim

Power¹

- L = Low Power, 5.6W @ 350mA

CRI

- 92 = 92 CRI

CRI/CCT²

- 27 = 2700K
- 30 = 3000K
- 35 = 3500K
- 40 = 4000K

Power Supply (remote only)³

- RS010 = Remote eldoLED 0-10V 1% dimming, 120-277V (22W, 50W, 100W)
- RD010 = Remote eldoLED 0-10V 0.1% dimming, 120-277V (22W, 50W or 100W)
- RSPH = Remote phase (2-wire) 3% dimming, 120V only (20W)
- RPEQ0 = Remote Lutron Hi-Lume Premier 0.1% EcoSystem dimming, 120-277V (20W)
- RD2S = Remote DALI-2 for Static White 0.1% dimming, 120-277V (22W, 50W or 100W)
- X = No driver

Finish

- W = White, 15% gloss, RAL 9003

Options

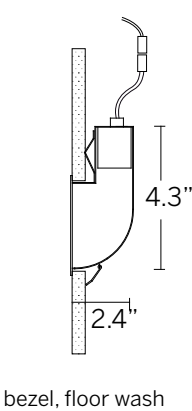
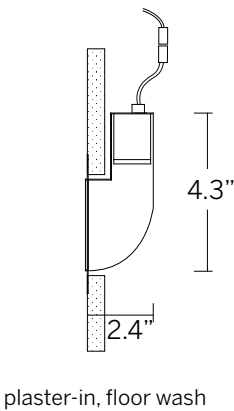
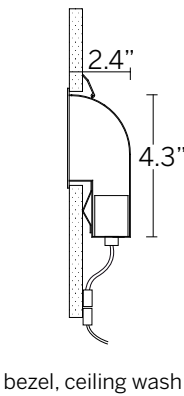
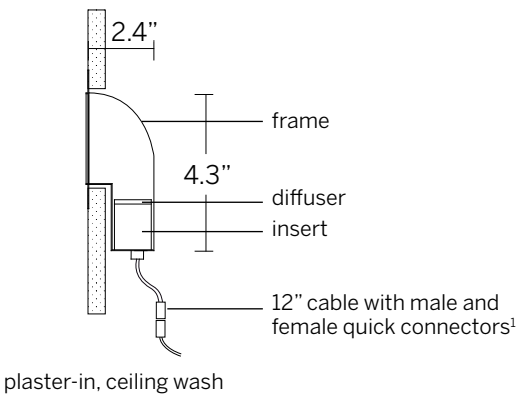
- EM = Emergency (remote)
- AWNRF = Lutron Athena Wireless Node RF (RS010, RD010, RD2S drivers only)

1 Wattage shown does not include power supplies/drivers.

2 See photometric data sheet for delivered lumens.

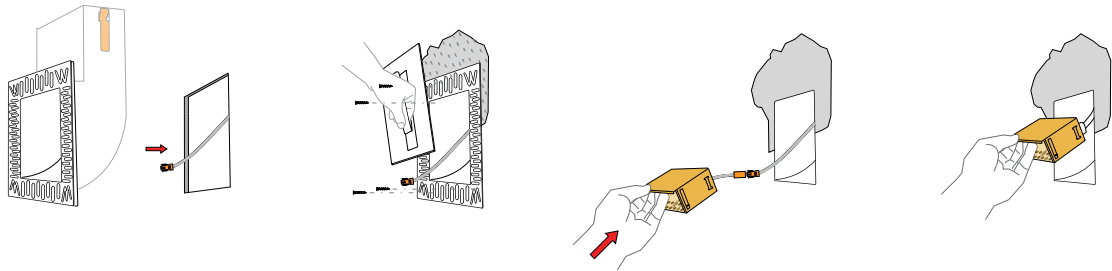
3 See driver information for details.

2.4" Square Ceiling / Floor Wash



cut-out dimensions 2 3/4" x 2 3/4"
¹Connectors included. Class II low voltage wire supplied by others. See power supply page for details.

Plaster-in instructions



Bezel instructions

