

INSTALLATION INSTRUCTION RDD35/RDP35/RDW35 HOUSING

All dimensions are given according to the SI system of units (mm, kg, °C), additional dimensions that are written in brackets, are given according to the U.S. measurement system (in, lbs, °F).

GENERAL REMARKS ON SAFETY



- Read all of these instructions before installing fixtures.
- Keep all of the instructions for future reference.
- Turn off power before installing fixture.
- Installation is to be performed by a qualified electrician only.
- All installations are to conform to the standards of the National Electrical Code as well as all local jurisdictional codes and regulations.
- Any modification of the luminaire will void any and all written or implied warranties.
- Do not open the fixture -this will void the IP rating.
- The manufacturer accepts no responsibility for damage to persons or property arising through improper use or installation.

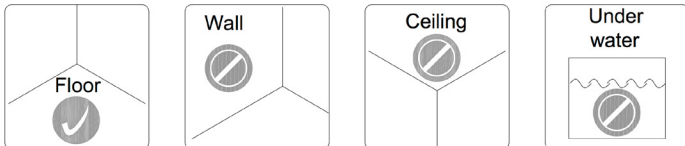
WARRANTY



- All products are factory tested and are guaranteed free from factory defect for a period of 3 years under following terms:
- Product has not been subject to incorrect voltage or polarity connection.
 - Product has not been subject to physical or atmospheric damage.
 - Product has been returned and factory evaluated for defect or malfunction.
 - All drivers and controllers are approved for use by FILIX.
 - The luminaire factory seal (IP rating) has not been compromised

The manufacturer accepts no responsibility for damage to persons or property arising through improper use or installation.

POSSIBLE INSTALLATION POSITIONS



*The surface temperature of the fixture is $\approx 40^{\circ}\text{C}$ (104°F) and imposes no limits on installation



*It has been designed and tested to stand a static load up to 500kg (1100 lb)



IP20



ABS /Stainless steel



For WET location



When installing luminaire outer housing must be used.

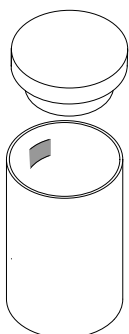


This product must be installed in accordance with the applicable installation code by a person familiar with the construction and operation of the product and the hazards involved.

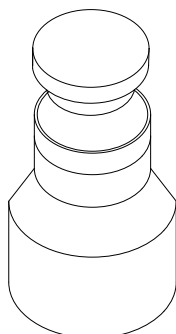


Product must be installed flush or slightly below grade to protect from damage due to equipment operated over them

TILES HOUSING



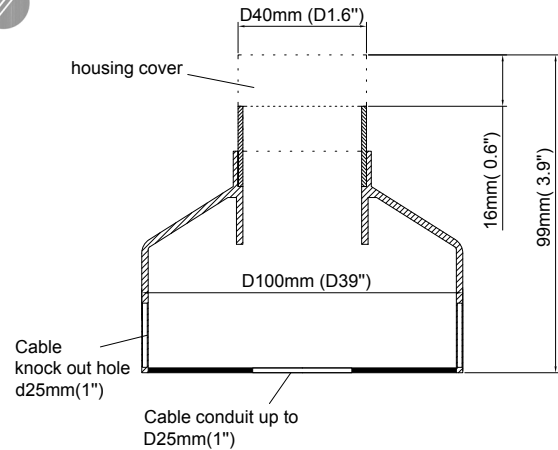
CONCRETE HOUSING



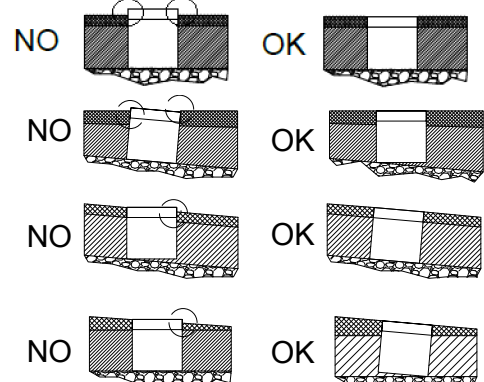
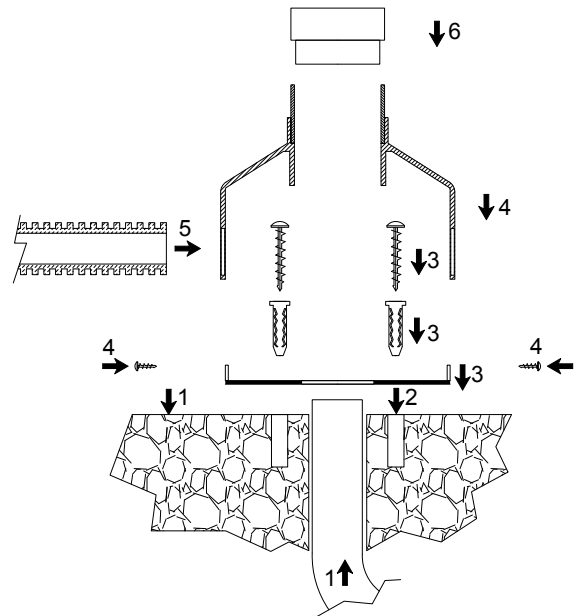
FILIX



CONCRETE HOUSING



1. Prepare proper drainage or drainage pipe at installing position.
2. Using bottom housing sheet as template drill holes for anchor 6mm (15/64") screws .
3. Fix bottom housing sheet on to surface with anchor and screws .
4. Fix housing on to bottom sheet
5. Insert cable pipe with supply cable inside housing
6. Place safety cover on top .
7. Pour concrete around the housing.

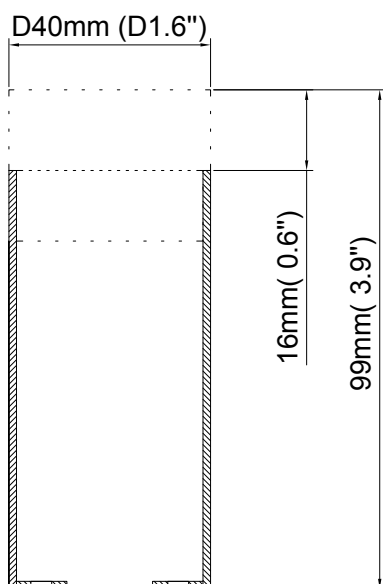


LEGEND

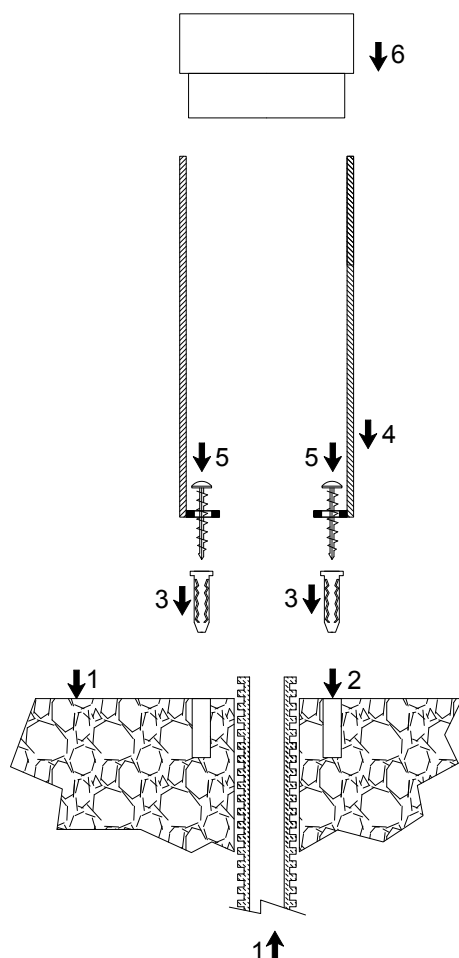
- | | | | |
|-----------------|--------------------|-------------------------|---------------|
| Attention Info | Confirmation Mark | Impact resistance range | Safety |
| Electrical Info | Ingress protection | Pictures/ drawings | Exclusion |
| Humidity Info | Temperature range | Power supply type | Material Type |
| Luminaries | Underwater fixture | Docs / certifications | |
| Outer housings | Pressure range | Mechanical | |



TILES HOUSING



1. Prepare proper drainage and cable pipe with cable at installing position.
2. Using housing as template drill holes for anchor 6mm(15/64") screws.
3. Insert anchors
4. Place housing on to surface.
5. Fix housing on to bottom sheet with screws
6. Place safety cover on top.
7. Pour concrete or install tiles around the housing

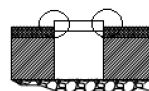


FILIX

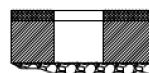
inter•lux



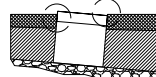
NO



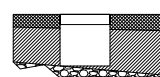
OK



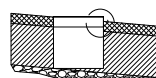
NO



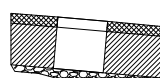
OK



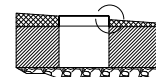
NO



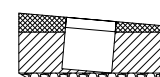
OK



NO



OK



LEGEND



Attention Info



Confirmation Mark



Impact resistance range



Safety



Electrical Info



Ingress protection



Pictures/drawings



Exclusion



Humidity Info



Temperature range



Power supply type



Docs/certifications



Luminaries



Underwater fixture



Pressure range



Mechanical



Outer housings



Pressure range



Mechanical