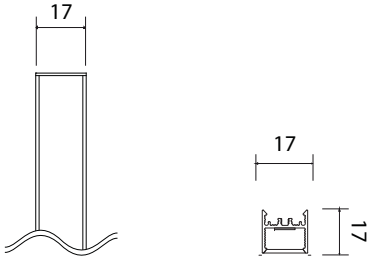


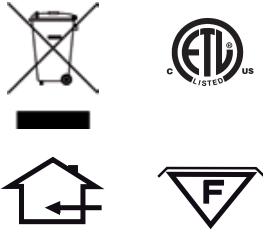
# whitegoods

installation instructions  
20 linear surface mount:

SM20LED-(mm)



- ⚠ Ensure all mains power is switched off at source.
- ⚠ Do not attempt installation or maintenance on electrically live product.
- ⚠ Installation and maintenance to be carried out only by a qualified electrician or electrical contractor.



## inter•lux

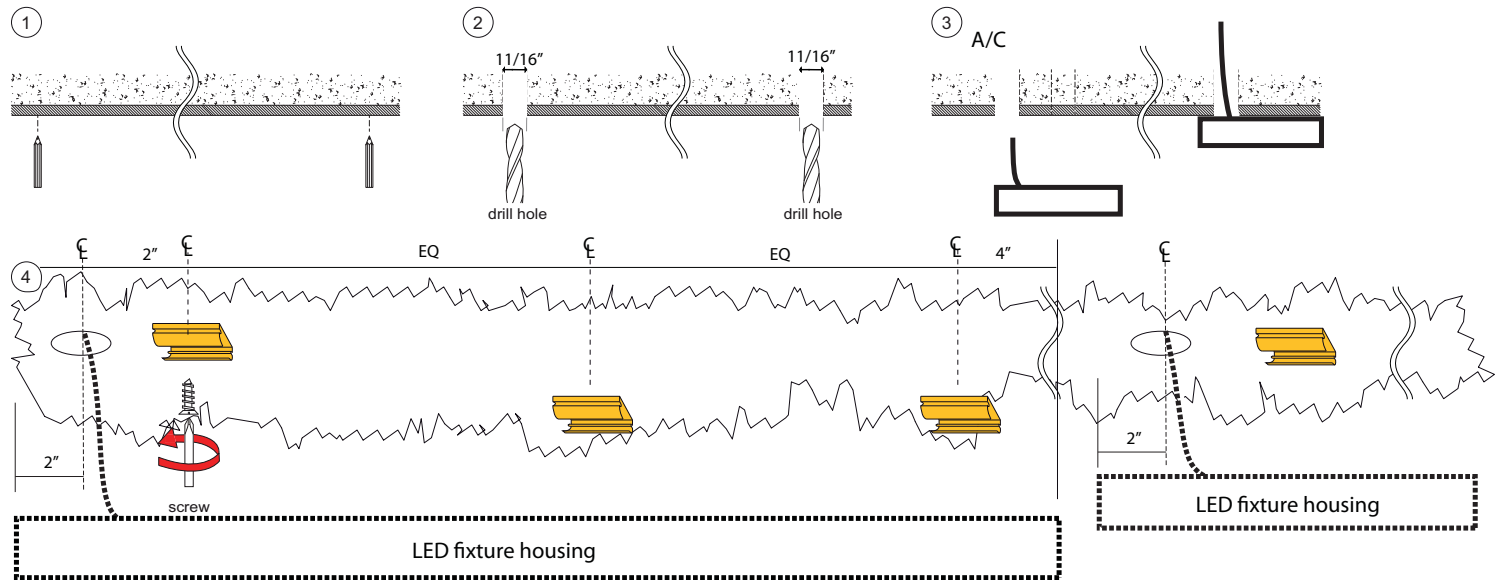
3741 Commerce Drive  
Suites 306-308  
Baltimore, MD 21227

410 381 1497  
quotes@inter-lux.com  
orders@inter-lux.com

Registration number is WEE/FG0362QY

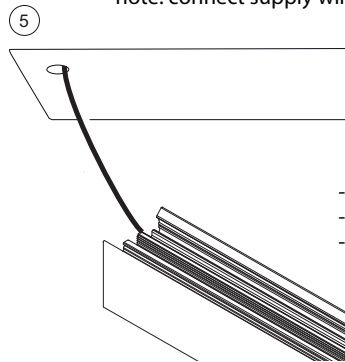
## installation

- 1 - Mark out holes for wiring entrance 2" from end of each LED fixture housing and mark out holes for mounting clips.
  - distribute fixing clips equally through out the length of the installation (install mounting clips 4" from end of housing and one at center 3ft and above).
- 2 - Drill holes 11/16" Ø for supply wires. See application layout drawings for power feed location. Remove any insulation or obstruction from wiring.
- 3 - Extend plenum rated cable from each housing to remote mounted driver.
- 4 - Secure fixing clips with screw type (not supplied) as required compatible with mounting surface for secure attachment.
  - Continue this process for the each LED fixture housing.



## wiring connection

- 5 - Hard wired plenum rated cable 18/2 supplied (length as ordered). Extend and connect to remote driver.
  - note: connect supply wires to remote driver. Parallel wiring required. Positive to Positive and Negative to Negative.

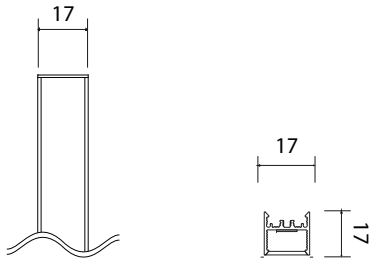


- IMPORTANT: Constant voltage LEDs supplied require parallel wire connections. Positive to Positive and Negative to Negative.
- Follow this process for the remaining LED modules
- Once the connection has been made feed the wire and the connector through the hole made in the ceiling.

# whitegoods

installation instructions  
20 linear surface mount:

SM20LED-(mm)



- ⚠ Ensure all mains power is switched off at source.
- ⚠ Do not attempt installation or maintenance on electrically live product.
- ⚠ Installation and maintenance to be carried out only by a qualified electrician or electrical contractor.



## inter•lux

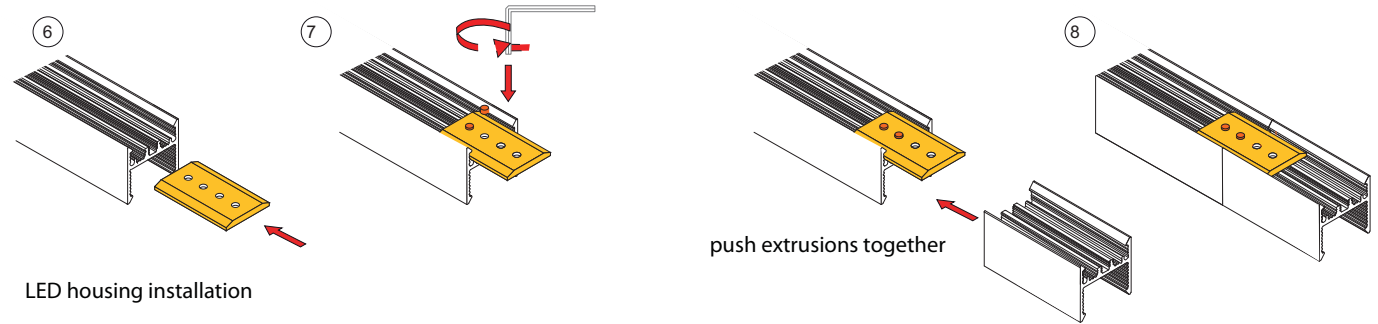
3741 Commerce Drive  
Suites 306-308  
Baltimore, MD 21227

410 381 1497  
quotes@inter-lux.com  
orders@inter-lux.com

Registration number is WEE/FG0362QY

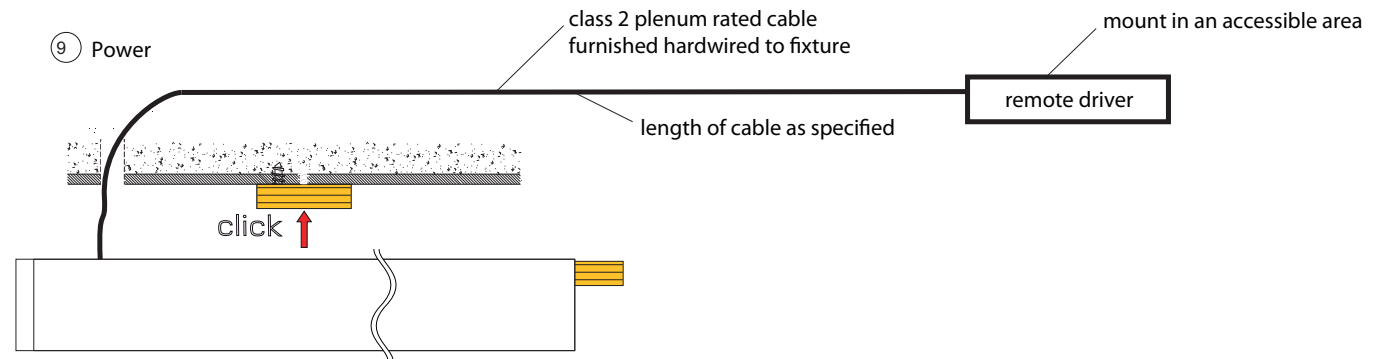
### joiner connecting bracket installation

- 6 - Slide the connecting joiner to the LED housing so that half the connecting joiner is still exposed.
- 7 - Fix 2 no. grub screws in place to secure the connecting joiner to the LED housing.  
Follow these steps for the remaining LED housings.
- 8 - For adjoining LED housing, slide the adjacent housing onto the adjacent housing with fixed connecting joiner.



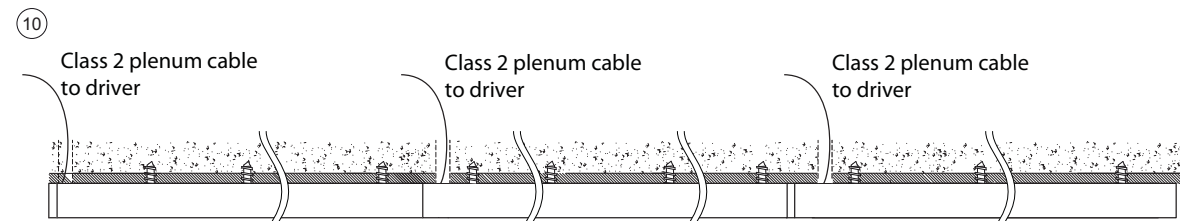
### LED housing installation

- 9 - Connection to constant voltage PCB is required for each extrusion section.



### module installation

- 10 - Connect the wired LED housing to the mounting clips.
  - Attach each remaining wired LED housings to mounting clip.
  - Diagram below illustrates schematic of multiple power feeds. Connection to remote driver required for each power feed.



Fixing connected modules

11 - Ensure the connected module(s) have been securely wired then attach to mounting clips and slide onto joint connector.

