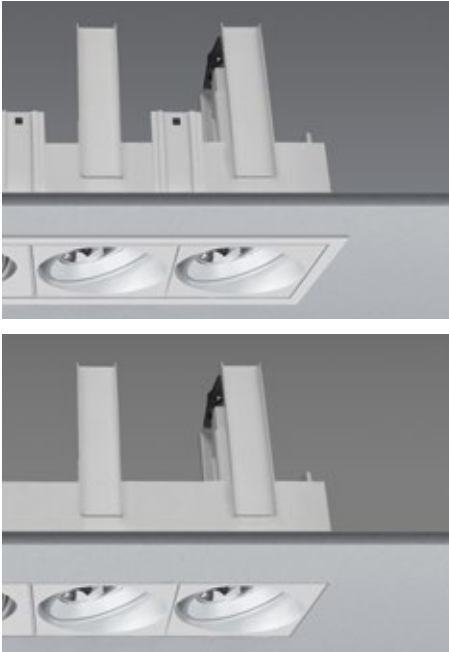
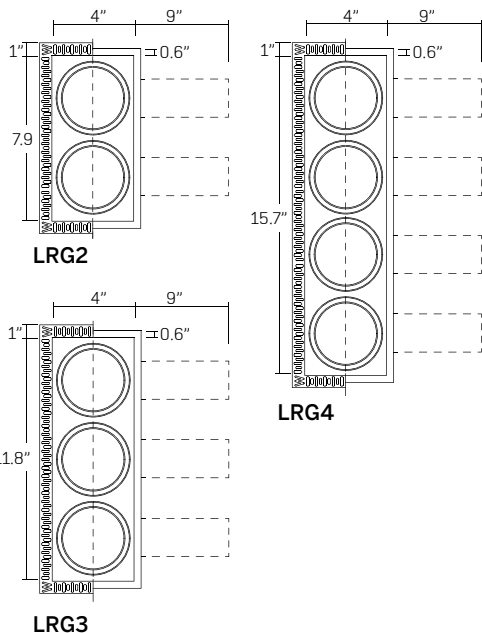
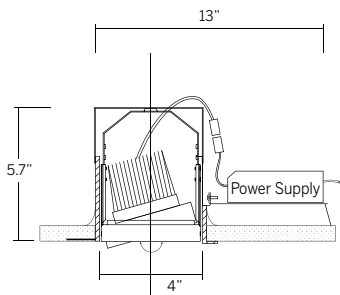


100 Linear Gimbal LED Specifications



A 4 inch linear recessed directional multiple gimbal luminaire with minimal visual impact.



Ordering Information

Model	# of Lamps	LED ¹	Rated Lumens	Beam Angle	Voltage	Power ²	Options
WG-P100LRG plaster-in	2	80 CRI XTA-827 XTA-830 XTA-835 XTA-840	965 8.2W	38 54	UNV	S D010 D3W DES ³	CG FR MP
WG-B100LRG bezel	3						
	4						

Luminaire

- Bezel trim or trimless 'plaster-in' 4" multiple head gimbal for drywall ceilings.
- Installation from below for remodel or new construction.
- 'Easy click' tool free installation of diecast aluminum lamp insert module.
- Die-cast aluminum trim housing with heavy gauge galvanized steel yoke with removable jbox from below ceiling.
- Pre-wired with a 'Plug and Play' electrical connection.
- Open aperture standard, other lenses available (see options).
- 30° tilt in all directions.
- Powdercoat painted white - RAL 9010.

of Lamps (cutout dimensions)

- 2 = 2 lamp (8 1/2" x 4 3/4")
- 3 = 3 lamp (12 1/2" x 4 3/4")
- 4 = 4 lamp (16 3/8" x 4 3/4")

LED¹

- **Xicato 80 Series, 80 CRI**
XTA-827 = 2700K
XTA-830 = 3000K
XTA-835 = 3500K
XTA-840 = 4000K
- **Xicato Artist Series, 95 CRI**
XTA-927 = 2700K
XTA-930 = 3000K
XTA-935 = 3500K
XTA-940 = 4000K

Rated Lumens

- **Xicato 80 Series**
965 = 965 lm @ 500mA, 8.2W (3K)
- **Xicato Artist Series**
965 = 965 lm @ 500mA, 10.9W (3K)

Beam Angle

- 38 = 38° accent illumination
- 54 = 54° general illumination

Voltage

- UNV = 120-277V
- 120 = 120V

Power Supply²

- S = Standard non-dim driver, 120-277V.
- D010 = EldoLED, 1%, 0-10V dimming, 120-277V.
- D3W = Lutron, 1%, 3-wire fluorescent dimming, 120V-277V.
- DES = Lutron, 1%, EcoSystem E1/E2 digital dimming, 120V-277V.³
- DFPN = Lutron 1% forward phase with neutral, 120V only.³

Options (open aperture standard)

- CG = clear glass
- FR = frosted glass
- MP = micro prismatic glass

Emergency (remote)

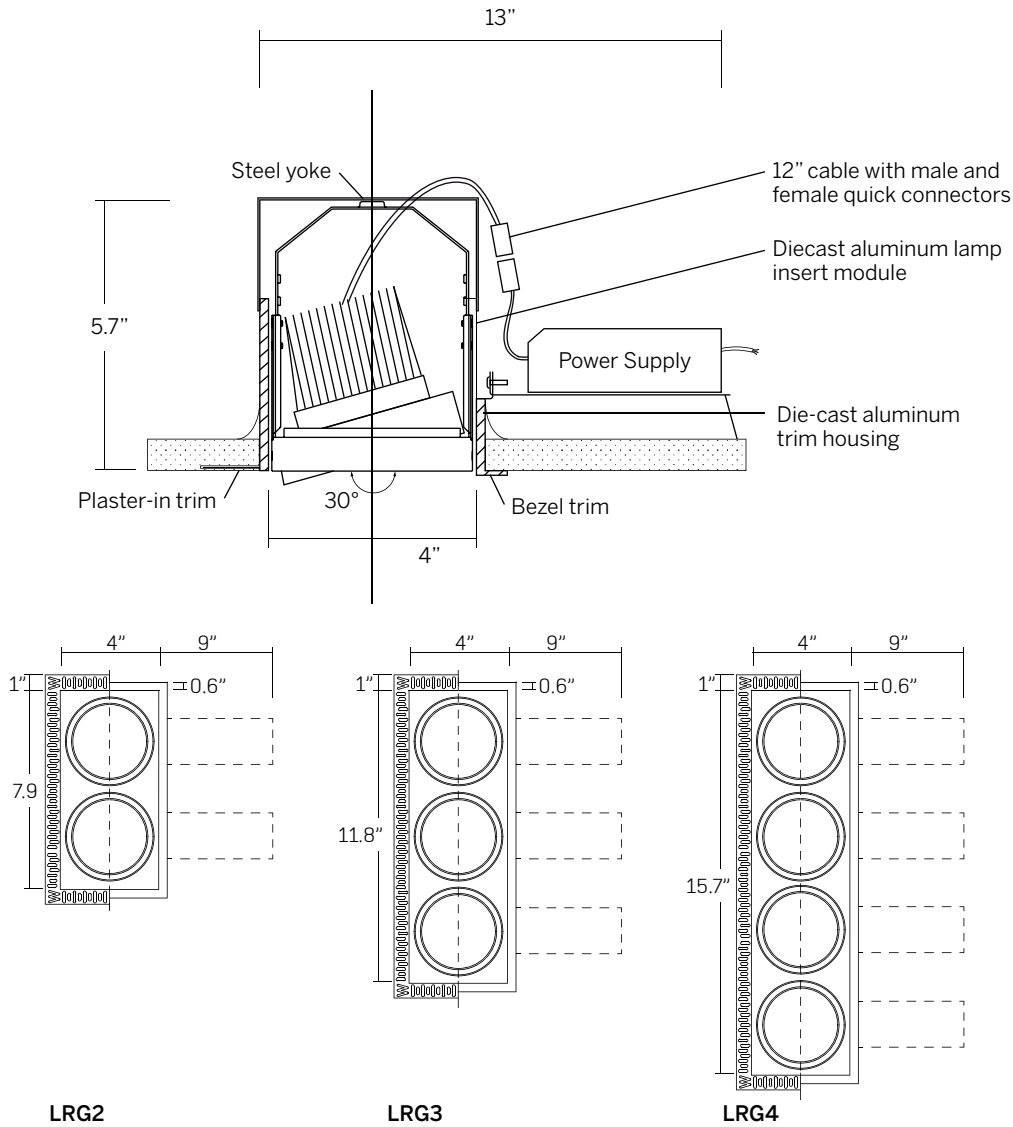
- Emergency LED driver available, order separately.

¹XI-827, 830 and 835 are standard.

²See power supply page for details.

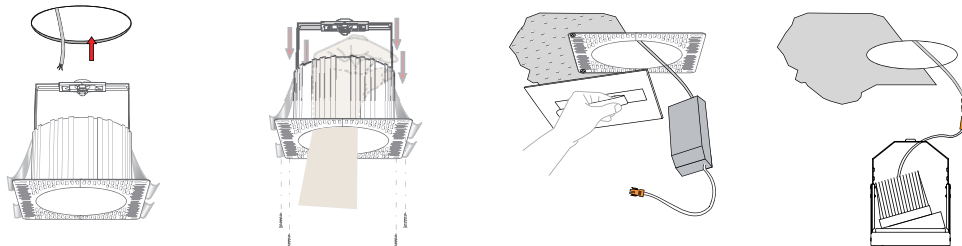
³Consult factory for lead-times.

100 Linear Gimbal LED Dimensions

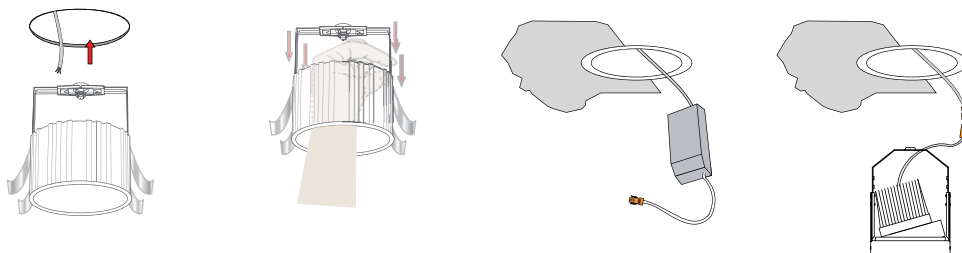


cutout dimensions
 LRG2 (2 lamp) 8 1/2" x 4 3/4"
 LRG3 (3 lamp) 12 1/2" x 4 3/4"
 LRG4 (4 lamp) 16 3/8" x 4 3/4"
 See power supply page for details.

Plaster-in instructions

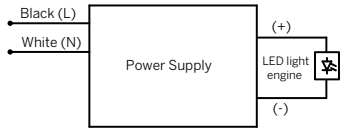


Bezel instructions

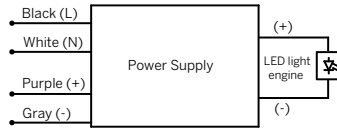


100 Linear Gimbal LED Power Supplies

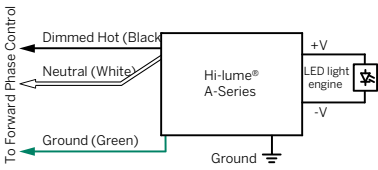
S (Standard non-dim)



D010 (EldoLED 0-10V)

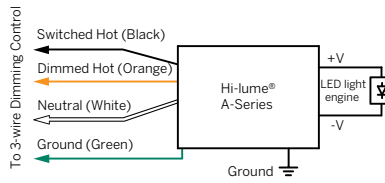


DFPN (Lutron forward phase with neutral)

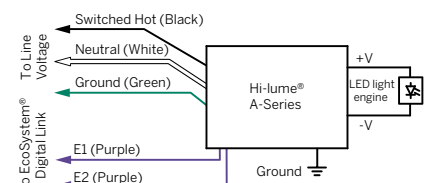


Note: Colors shown correspond to terminal blocks on driver.

DW3 (Lutron 1%, 3-wire)



DES (Lutron EcoSystem® digital)



Note: Colors shown correspond to terminal blocks on driver.