

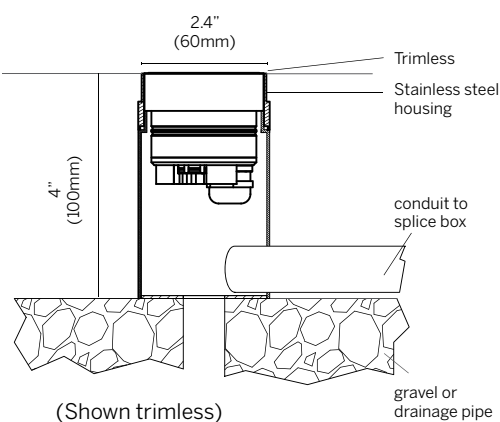


## Ordering Information<sup>1</sup>

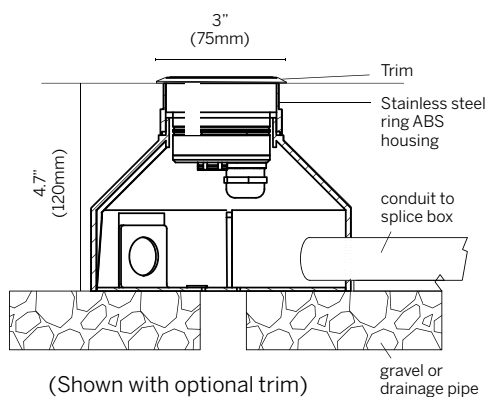
Model	Power	Color	Optics	Voltage	Options	Housing
F RDW60	L	27 30 35 40	WW	24	TR C1 C2 C3	RD60C RD60T

<sup>1</sup>Specify remote power supply separately below.

### Tile Housing (driveover)



### Concrete Housing (driveover)



### Luminaire

- Trimless for seamless integration into grade; optional stainless steel trim
- Snap in installation with no exposed hardware
- Sustainable design with replaceable LED module
- Regressed LED with Anti-Glare System
- IP67, UL STD 1598, wet location, Pedestrian driveover rated 3000 lb
- Stainless steel construction (concrete housing), ABS construction (tile housing) with clear tempered glass
- 1' (0.3m) feed cable standard

### Size

- 2.4"  $\varnothing$  (63mm) x 4" H (100mm) standard trimless
- 3"  $\varnothing$  (75mm) x 4.7" H (120mm) with optional trim

### Power

- L = 6W, 3000K - 555 lm

### Color Temperature

- 27 = 2700K
- 30 = 3000K
- 35 = 3500K
- 40 = 4000K
- 2 Step MacAdam
- CRI: > 85

### Optics

- WW = WallWash 32°x46° tilt 14°

### Voltage

- 24 = 24VDC fixture voltage (remote driver required)

### Options

- TR = stainless steel 304 trim, size: 0.1" (3mm)
- C1 = 10' (3m) feed cable
- C2 = 20' (6m) feed cable
- C3 = 30' (9m) feed cable

### Housing

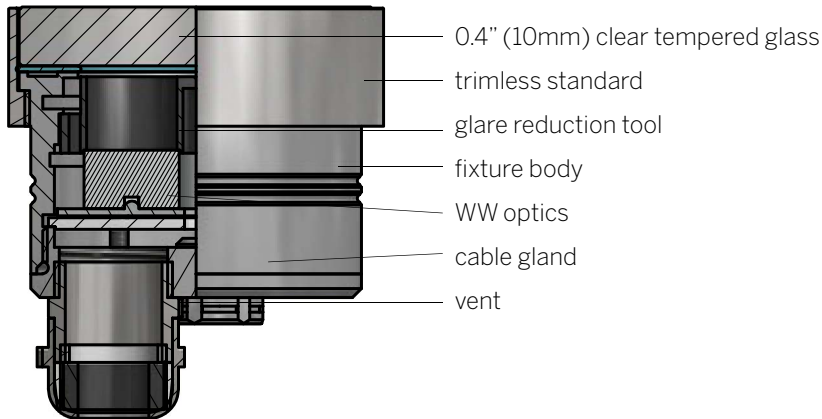
- RD60C = concrete
- RD60T = tile

### Power Supply<sup>2</sup> (Remote)

- D-520-24006: Osram 10% 0-10V dimming, 96W, 24VDC, 120-277VAC

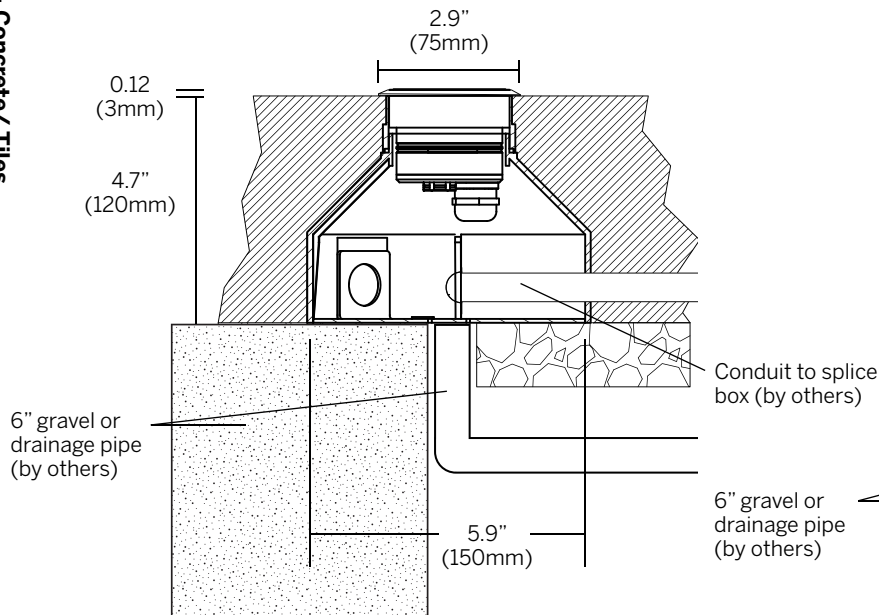
<sup>2</sup>See power supply pages for details. No enclosure, unless stated. lm80 values shown.

Optics Accessories

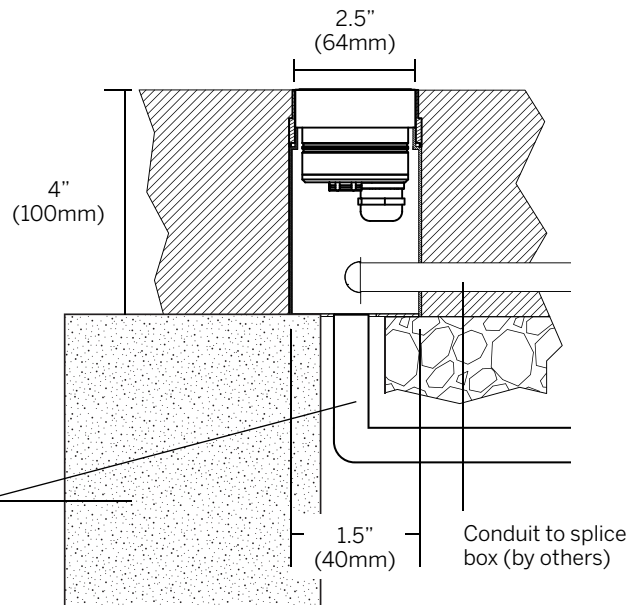


Floor - Concrete/ Tiles

Concrete Installation Housing (RD60C)  
(trim shown)



Tiles/Wood Installation housing (RD60T)  
(trimless shown)



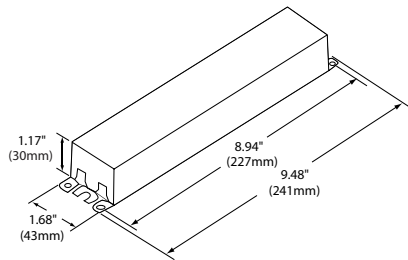
## Single Color Drivers

Qty.	Part Number	Description	Case	Nominal Input Voltage (V)	Nominal Input Current (A)	Power Factor	Output Power Range (W)	Dimming Mode	Dimming Control	Dimming Range	Location Rating
	D-520-24006	Osram 0-10V dim	1	120 277	0.97 0.39	0.9	1-96	PWM	0-10V	10 -100%	Damp

The installer and/or end user must take precautions to prevent and/or test the effects of EMI (electromagnetic interference). Maximum recommended load is 80% of driver rating.

### Case dimensions

#### Case 1 (no enclosure)



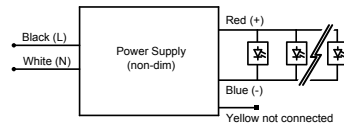
#### Maximum wiring distance\*

Wire gauge	Load per driver	
	Osram	
	≤48W	≤72W
#18AWG	37'	25'
#16AWG	59'	39'
#14AWG	95'	63'
#12AWG	151'	101'
#10AWG	241'	160'

\*Voltage drop guide for 24VDC. Actual Voltage drop to be calculated by installer.

### Wiring diagrams

#### 96W Non-Dim



#### 96W Dim

