

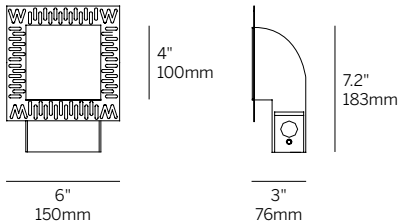
# 4" Square Ceiling / Floor Wash



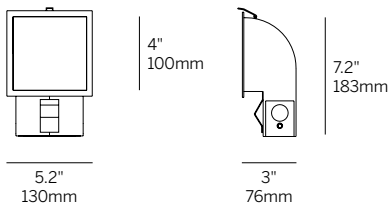
Recessed Plaster Trim



Recessed Bezel Trim



Recessed Plaster Trim (RPT)



Recessed Bezel Trim (RBT)

cut-out dimensions 4 5/8" x 4 5/8"

## Ordering Information

WG-100SCFW			92			W	
Model	Fixation	Power <sup>1</sup>	CRI	CCT <sup>2</sup>	Driver <sup>3</sup>	Finish	Options
WG-100SCFW	RPT RBT	L M H	92	27 30 35 40	RS010 RD010 RSPH RPEQO RD2S X	W	EM AWNRF

## Luminaire

- 4" square aperture recessed wall fixture with concealed source providing asymmetric illumination for ceiling or floor wash applications.
- Efficacy up to 63 lumens per watt (delivered).
- CREE 2-step MacAdam LEDs.
- CRI 92+ standard.
- L70 (TM21 Projected 85° C) Static White 55,400 hours.
- ETL and ETL-C for dry and damp location.
- Luminaire installed and maintained from the wall side. Maximum wall thickness 5/8" (4.5" minimum clearance in wall).
- 'Easy click' tool free installation of diecast aluminum lamp insert module. Heavy gauge steel housing / trim.
- 5-year warranty.

## Fixation

- RPT = Recessed plaster trim
- RBT = Recessed bezel trim

## Power<sup>1</sup>

- L = Low power, 8.1W @ 250mA
- M = Mid power, 11.5W @ 350mA
- H = High power, 16.8W @ 500mA

## CRI

- 92 = 92 CRI

## CRI/CCT<sup>2</sup>

- 27 = 2700K
- 30 = 3000K
- 35 = 3500K
- 40 = 4000K

## Power Supply (remote only)<sup>3</sup>

- RS010 = Remote eldoLED 0-10V 1% dimming, 120-277V (22W, 50W, 100W)
- RD010 = Remote eldoLED 0-10V 0.1% dimming, 120-277V (22W, 50W or 100W)
- RSPH = Remote phase (2-wire) 3% dimming, 120V only (20W)
- RPEQO = Remote Lutron Hi-Lume Premier 0.1% EcoSystem dimming, 120-277V (20W)
- RD2S = Remote DALI-2 for Static White 0.1% dimming, 120-277V (22W, 50W or 100W)
- X = No driver

## Finish

- W = White, 15% gloss, RAL 9003

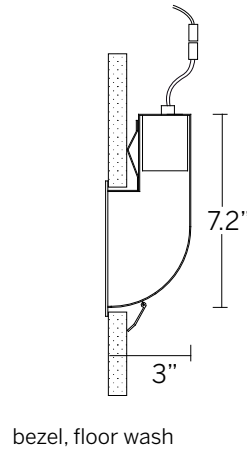
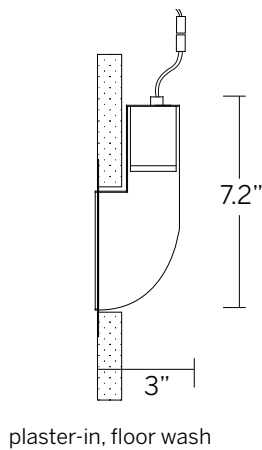
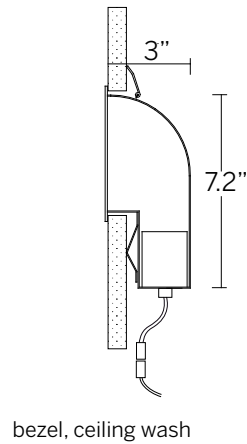
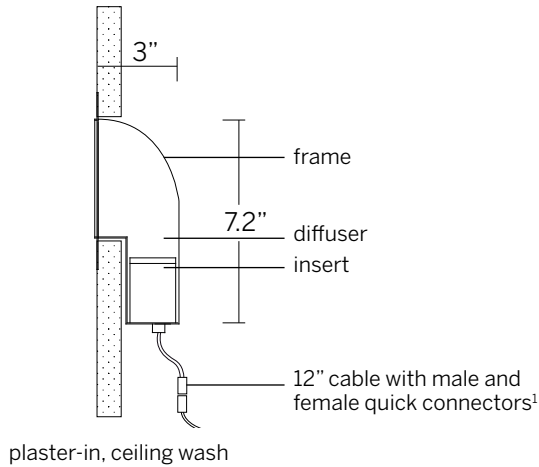
## Options

- EM = Emergency (remote)
- AWNRF = Lutron Athena Wireless Node RF (RS010, RD010, RD2S drivers only)

- 1 Wattage shown does not include power supplies/drivers.
- 2 See photometric data sheet for delivered lumens.
- 3 See driver information for details.

# 4" Square Ceiling / Floor Wash

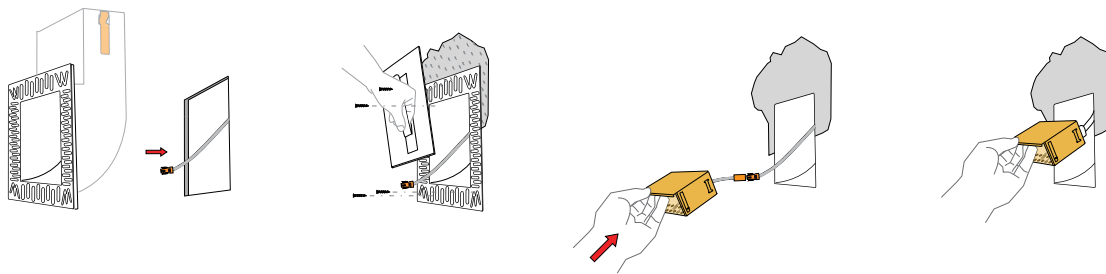
inter•lux



cut-out dimensions 4 5/8" x 4 5/8"

<sup>1</sup>Connectors included. Class II low voltage wire supplied by others. See power supply page for details.

## Plaster-in instructions



## Bezel instructions

