

1.5" ProTools Adjustable Square Recessed

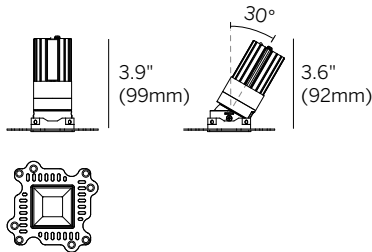
inter•lux



Recessed Plaster Trim (RPT)



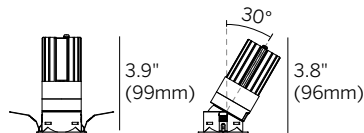
Recessed Bezel Trim (RBT)



□ 1.6" (41mm)

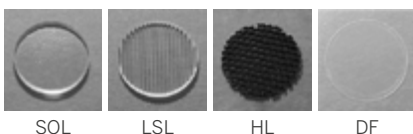
□ 3.8" (96mm)

Plaster Trim (RPT)
Cutout: □ 2" (50mm)



□ 1.6" (41mm)
□ 2" (51mm)

Bezel Trim (RBT)
Cutout: □ 1.8" (46mm)



Ordering Information											
WG-40SPTA		M	92			SRC					
Model	Fixation	Power ¹	CRI	CCT ²	Driver ^{3,4}	Cover	Lens	Beam	Trim Finish	Housing ⁴	Options
WG-40SPTA	RBT RPT	M	92	27 30 35 40 WD	S010* D010* SPH* PEQ0* D2S* X	SRC	OA ⁵ SOL ⁵ LSL ⁵ HL ⁵ DF	20 25 35 50	W (std) B S F	LP NC IC CP X	TM EM AWNRF

*Add 'R' for remote driver, ex. 'RS010'

Luminaire

- Part of a complete family of 1.5" aperture matching downlights.
- 1.6" square aperture recessed downlight with 0.8" light aperture regressed 0.3" from ceiling plane.
- Tilt 30°, rotation 360° (90° increments).
- Efficacy up to 79 lumens per watt (delivered).
- UGR < 19 for some configurations to comply with WELL requirements.
- CREE 3-step MacAdam LEDs.
- CRI 92+ standard.
- L70 (TM21 Projected 85°C) Static White 33,300 hours. Warm Dim 55,000 hours.
- ETL and ETL-C for dry and damp locations.
- Luminaire installed and maintained from below the ceiling. Maximum ceiling thickness 1.25".
- Housings available (see housings page).
- 5-year warranty.

Fixation

- RPT = Recessed Plaster Trim
- RBT = Recessed Bezel Trim

Power¹

- M = Mid Power, 9.1W @ 500mA

CRI

- 92 = 92 CRI

CCT²

- 27 = 2700K
- 30 = 3000K
- 35 = 3500K
- 40 = 4000K
- WD = Warm Dimming 1800 - 3000K

Integral Driver NC / IC / CP Housings Accessible Ceiling^{3,4}

- S010 = eldoLED 0-10V 1% dimming, 120-277V (22W)
- D010 = eldoLED 0-10V 0.1% dimming, 120-277V (22W)
- SPH = Phase (2-wire) 3% dimming, 120V only (20W)
- PEQ0 = Lutron Hi-Lume Premier 0.1% EcoSystem dimming, 120-277V (20W)
- D2S = DALI-2 for Static White 0.1% dimming, 120-277V (22W)

Remote Driver for NC / LP / IC / CP^{3,4}

- RS010 = Remote eldoLED 0-10V 1% dimming, 120-277V (22W, 50W or 100W)
- RD010 = Remote eldoLED 0-10V 0.1% dimming, 120-277V (22W, 50W or 100W)
- RSPH = Remote phase (2-wire) 3% dimming, 120V only (20W)
- RPEQ0 = Remote Lutron Hi-Lume Premier 0.1% EcoSystem dimming, 120-277V (20W)
- RD2S = Remote DALI-2 for Static White 0.1% dimming, 120-277V (22W, 50W or 100W)
- X = No Driver

Cover

- SRC = Square Recessed Cone

Lens

- OA = Open Aperture (clear lens provided standard)⁵
- SOL = Solite Lens⁵
- LSL = Linear Spread Lens⁵
- HL = Honeycomb Louver⁵
- DF = Diffusing Film

Beam

- 20 = 20° Beam Angle
- 25 = 25° Beam Angle
- 35 = 35° Beam Angle
- 50 = 50° Beam Angle

Trim Finish

- W = White, 15% gloss, RAL 9003 (standard)
- B = Black, 15% gloss, RAL 9005
- S = Silver, 15% gloss, RAL 9006
- F = Custom finish, specify RAL code

Housing (optional)⁴

- LP = Landing Pan (for remote driver)
- NC = New Construction Housing (integral driver for accessible ceilings only)
- IC = Insulated Ceiling Housing (integral driver for accessible ceilings only)
- CP = Chicago Plenum Housing (integral driver for accessible ceilings only)
- X = No Housing

Options

- TM = Thin Metal Ceiling Clip
- EM = Emergency (remote only)
- AWNRF = Lutron Athena Wireless Node RF (RS010, RD010, RD2S drivers only)

1. Wattage shown does not include power supplies / drivers.
2. See photometric data sheet for delivered lumens.
3. See driver information page for details.
4. See housings pages for details.
5. One accessory per fixture.