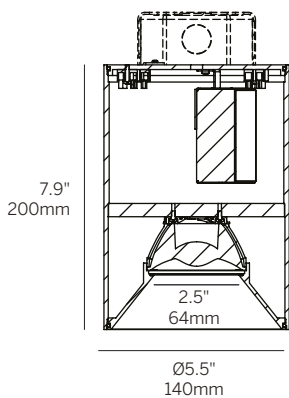


5.5" ProTools Downlight

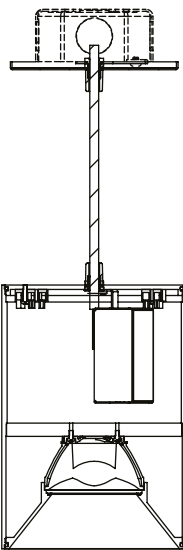
Round Cylinder



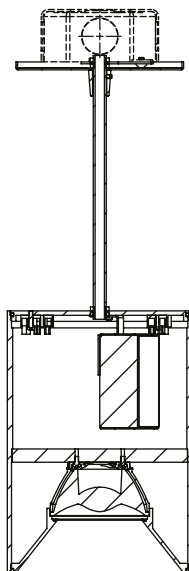
Surface mount (SM)



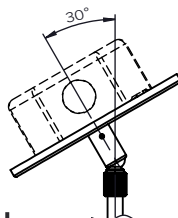
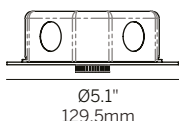
Suspended cable (SC)



Suspended rigid stem (SR)



Canopy (5" dia, 4" j-box)



Powered by **I B L**

whitegoods

Ordering Information												
Model	Mounting	Canopy	Power ²	CRI	CCT ³	Driver ⁴	Cover	Lens	Beam	Housing Finish ⁶	Reflector Finish	Options
WG-140RPTDL							RRC					
WG-140RPTDL	SM SC1 ¹ SC2 ¹ SC3 ¹ SR1 SR2 SR3 SRX	5 X	H XH SH	92 98	27 30 35 40 WD	S010 D010 SPH PEQ0 D2S RS010 RD010 RD2S X ⁵	RRC	OA SOL LSL HL	20 25 35 50 60	W (std) B S F	W (std) B S F	EM WL AWNRF

Luminaire

- 5.5" round ceiling mounted cylinder downlight.
- Surface, suspended cable and rigid stem mounting.
- Wide range of LED CCTs and reflectors.
- High lumen output and excellent color rendition for all applications. Efficacy up to 150 lumens per watt (delivered).
- UGR < 19 for some configurations to comply with WELL requirements.
- CREE 2 step McAdam LEDs.
- CRI >92+ standard, >98+ available.
- Warm Dim 1800 - 3000K.
- Long life L70 66,000 hrs based on LM-80 & TM-21 applicable test data (Warm Dim 55,000 hours).
- Constant current drivers.
- 0-10V, Phase, Lutron, DALI and DMX options available.
- 5 Year warranty.

Mounting

- SM = Surface mounted
- SC1 = Suspended cable 39.4" (1m)¹
- SC2 = Suspended cable 78.7" (2m)¹
- SC3 = Suspended cable 118.1" (3m)¹
- SR1 = Suspended rigid swivel stem 39.4" (1m)
- SR2 = Suspended rigid swivel stem 78.7" (2m)
- SR3 = Suspended rigid swivel stem 118.1" (3m)
- SRX = Suspended rigid swivel stem (specify to nearest 0.25", 118.1" max.)

Canopy

- 5 = 5" dia. for 4" j-box
- X = No Canopy (surface mount only)

Power²

- H = High Power, 12W @ 350mA (n/a for WD)
- XH = Extra High, 19W @ 550mA
- SH = Super High, 26W @ 700 mA

CRI

- 92 = 92 CRI
- 98 = 98 CRI (n/a for WD)

CCT³

- 27 = 2700K
- 30 = 3000K
- 35 = 3500K
- 40 = 4000K
- WD = Warm Dimming 1800 - 3000K

Integral Driver⁴

- S010 = Standard 0-10V 1% dimming, 120-277V (30W)
- D010 = eldoLED 0-10V 0.1% dimming, 120-277V (22W) [n/a for Super High power]
- SPH = Standard Phase 1% dimming, 120V only (30W)
- PEQ0 = Lutron Hi-Lume Premier 0.1% EcoSystem dimming, 120-277V (20W) [High power only]
- D2S = DALI-2 (DT6) for Static White 0.1% dimming, 120-277V (22W) [n/a for Super High power]

Remote Driver⁴

- RS010 = Remote eldoLED 0-10V 1% dimming, 120-277V (50W or 100W)
- RD010 = Remote eldoLED 0-10V 0.1% dimming, 120-277V (50W or 100W)
- RD2S = Remote DALI-2 (DT6) for Static White 0.1% dimming, 120-277V (50W or 100W)
- X = No Driver⁵

Cover

- RRC = Round Recessed Cone

Lens (one accessory per fixture)

- OA = Open Aperture
- SOL = Solite Lens
- LSL = Linear Spread Lens
- HL = Honeycomb Louver

Beam

- 20 = 20° Beam Angle
- 25 = 25° Beam Angle
- 35 = 35° Beam Angle
- 50 = 50° Beam Angle (55° for WD)
- 60 = 60° Beam Angle (n/a for WD)

Housing / Reflector Finish⁶

- W = White, RAL 9003 (standard)
- B = Black, RAL 9017
- S = Silver, RAL 9006
- F = Custom finish, specify RAL code

Options

- EM = Emergency LED battery backup (remote only)
- WL = Wet location (IP65)
- AWNRF = Lutron Athena Wireless Node RF (RS010, RD010, RD2S drivers only)

- Suspended cable field adjustable.
- Wattage shown does not include power supplies/drivers.
- See photometric data sheet for delivered lumens.
- See driver information for details.
- Refer to driver information page for driver options that can power multiple fixtures. Ordered separately.
- Fixture, stem and canopy finish match.