

**IMPORTANT:** Fixture(s) must be wired in series! Refer to driver wiring document

Luminaires must be installed by a qualified electrician. Check with local and national codes for proper installation.



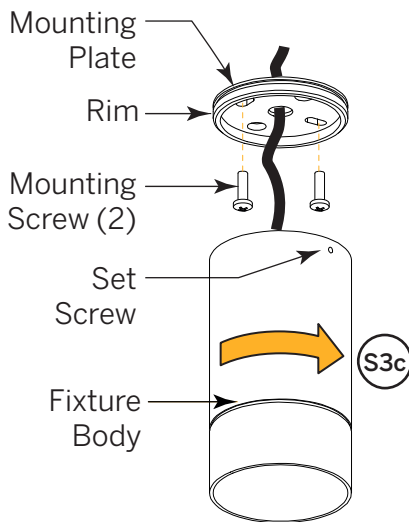
To prevent electrical shock disconnect electrical supply before installation or servicing.

**Never connect a live fixture!!!**

Contractor is responsible for adequately reinforcing walls and/or ceilings to support fixture weight. Provide blocking when necessary.

For Accessible Ceilings Only\*

Remote Driver



## Step 1

**Confirm Power Supply is Off!**

Unpack luminaire unit. Remote drivers and housings are supplied by Inter-lux.

## Step 2

**Ceiling Preparation**

Mark location and drill hole for cable pass-through

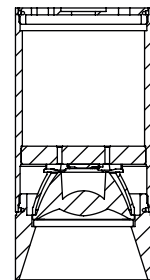
## Step 3

**Mount Fixture**

- a** Center Mounting Plate around hole. Secure to ceiling with Mounting Screws or anchors. Use backing material if necessary.
- b** Feed cable from fixture through center of Mounting Plate and up into hole.
- c** Slip Fixture Body over Rim of Mounting Plate. Secure by rotating clockwise. Lock into place with Set Screw.

## Included in Box

- (1) Fixture Body with connected cable
- (1) Mounting Plate
- (2) Mounting Screws
- (1) Set Screw



Cross-Section of Fixture

## Step 4

**Electrical Connection**

Above ceiling, connect power (and control) wire(s) to Remote Driver.

Need Help?

\*Alternatively, wire or cable may be fed from an accessible driver to the fixture in a non-accessible ceiling.