

**IMPORTANT:** Fixture(s) must be wired in series! Refer to driver wiring document

Luminaires must be installed by a qualified electrician. Check with local and national codes for proper installation.

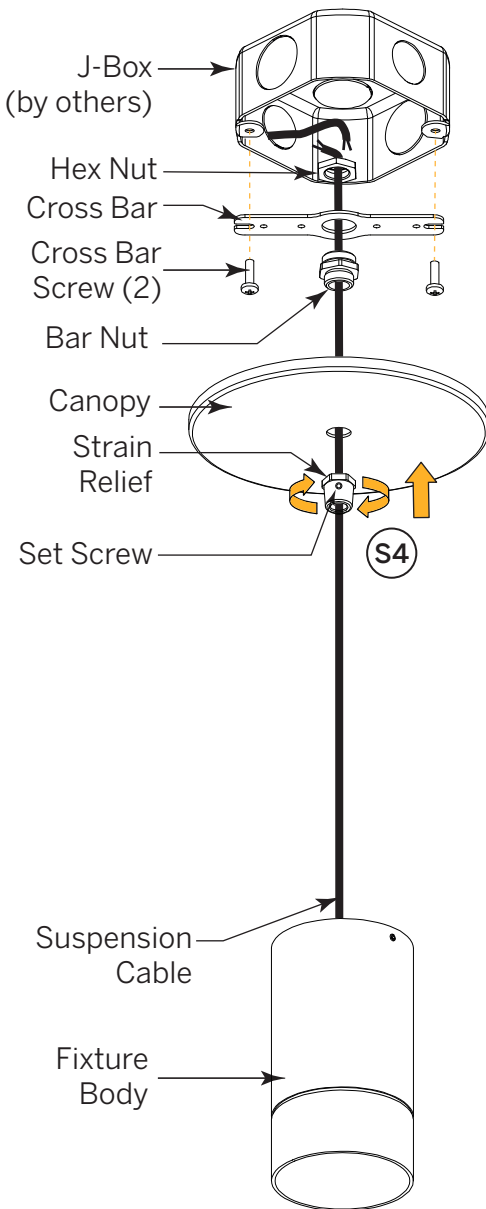


To prevent electrical shock disconnect electrical supply before installation or servicing.

**Never connect a live fixture!!!**

Contractor is responsible for adequately reinforcing walls and/or ceilings to support fixture weight. Provide blocking when necessary.

For Accessible Ceilings Only\*



\*Alternatively, wire or cable may be fed from an accessible driver to the fixture in a non-accessible ceiling.

## Step 1

**Confirm Power Supply is Off!**  
Unpack luminaire unit. Remote drivers and housings are supplied by Inter-lux.

## Step 2

- Ceiling Preparation**
- a** Mark location, cut opening, and mount J-Box. Pull power (and control) cable(s) inside. Attach Cross Bar with supplied screws.
  - b** Screw Bar Nut to bottom of Cross Bar. Secure with Hex Nut above Bar.

## Step 3

- Electrical Connection**
- a** From fixture, feed cable through Strain Relief and Canopy into J-Box.
- NOTE:** Hex Side of Strain Relief to contact canopy, as shown.
- b** Inside J-Box, join power (and control) wire(s) using suitable connectors.

## Step 4

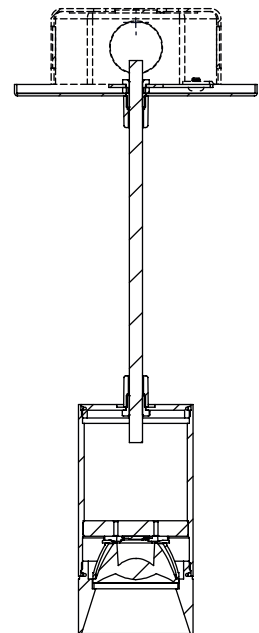
**Secure Luminaire**  
Slide Canopy and Strain Relief up suspension cable to ceiling. Screw Strain Relief to Bar Nut. Lock in place with Set Screw.

**Need Help?**

Remote Driver

## Included in Box

- (1) Fixture Body with connected cable
- (1) Cross Bar
- (2) Cross Bar Screws
- (1) Bar Nut
- (1) Hex Nut
- (1) Canopy
- (1) Strain Relief with Set Screw



Cross-Section of Fixture