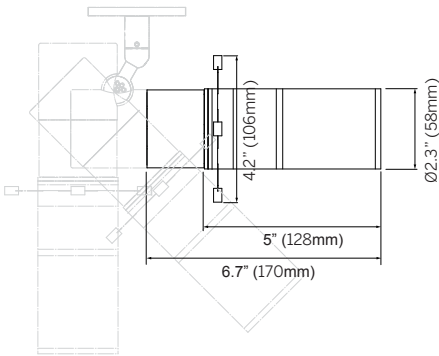
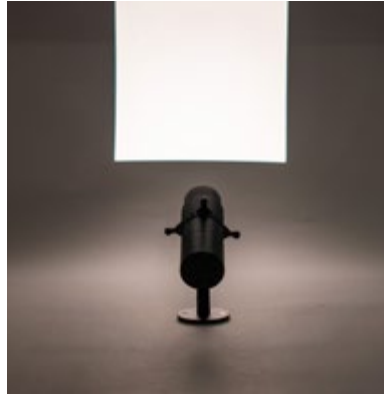
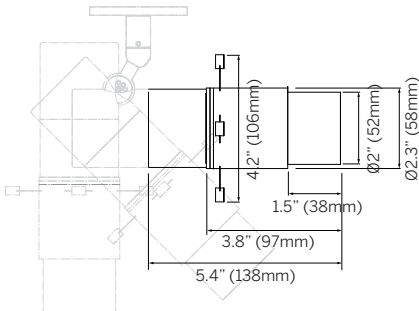


ZTA.50 LV Track Framer



Adjustable Beam (17-33.4°)



Fixed Beam (53°)

Luminaire

- Interior rated track spot light with fixed or adjustable framer.
- Track mounted (Stucchi Multisystem Evo - Low Voltage Track).
- Precision machined from 70 - 90% recycled aluminum.
- 95+ CRI with multiple CCTs and optics available.
- Fixture includes 0-10V dimming, driver remote.

Mounting¹

- ST = Stucchi Multisystem Evo - Low Voltage Track

Power²

- 12 = 12W (1513lm initial at 350mA, 36.9Vf)

CCT (95+ CRI)³

- 927 = 2700K
- 930 = 3000K
- 935 = 3500K
- 940 = 4000K

Optic

- 17-33 = Adjustable 17-33°
- 53 = Fixed 53°

Finish (interior always matte black)

- W = Pure White, RAL9010
- BL = Matte Black
- CF = Custom finish, specify RAL

Options

- GBS = Gobo Single Color
- GBD = Gobo Double Color

Power Supply⁴

- IL-DB12-LED-48002-UNV = Dry location enclosure 13.25"x 5"x 2.25" with CV Driver, 96W, 48VDC, 120/277V, Class 2

Controls (Dimming)

- 010 = 0-10V
- DL = DALI
- W = Wireless (Casambi or Xicato)

1. Order track separately. See Stucchi Onetrack data sheet for details.
2. Wattage shown is for LED only, system wattage varies depending on driver selected.
3. See photometric data sheet for delivered lumens.
4. Do not load driver beyond 76.8W. See driver information for details. Additional drivers available. contact factory.

Ordering Information

Model	Mounting	Power ²	CRI/CCT ³	Optic	Finish	Options	+	Driver ⁴	Controls
MS-ZTA50FR	ST	12	927 930 935 940	17-33 53	W BL CF	GBS GBD		IL-DB12-LED-48002-UNV	010 DL W

